

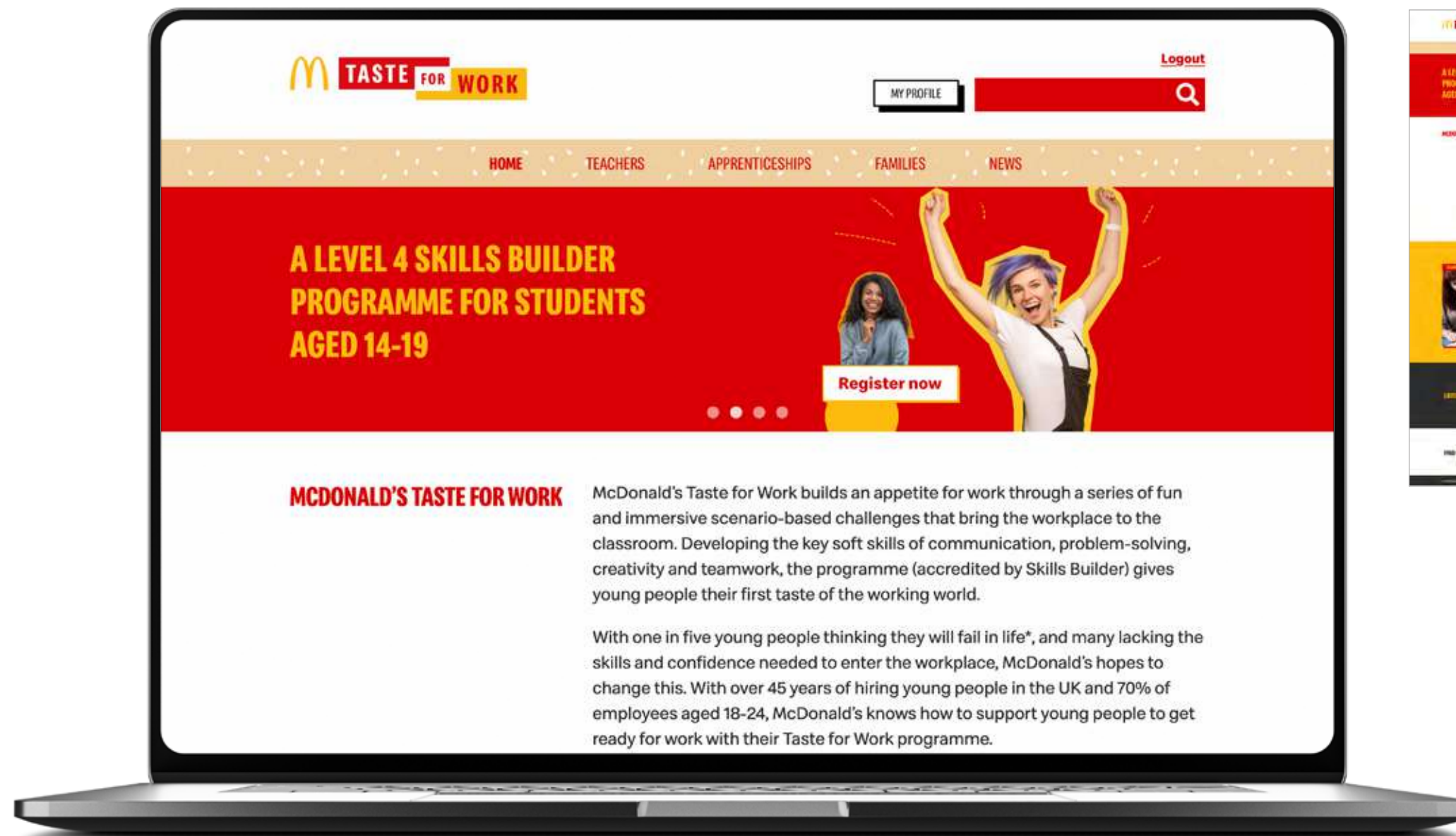
McDONALDS



TASTE **FOR** **WORK**



McDONALDS



SKY ARTS WEEK



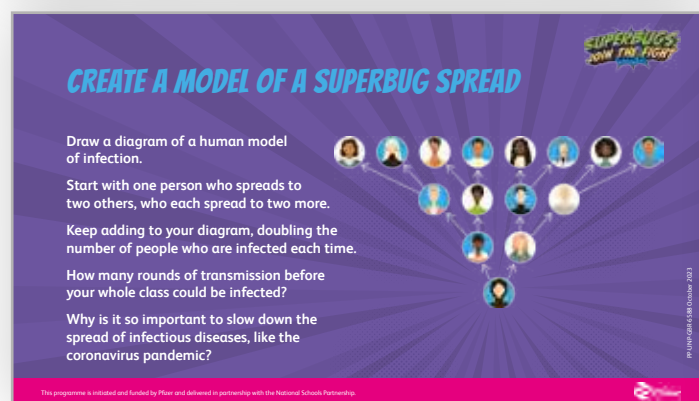
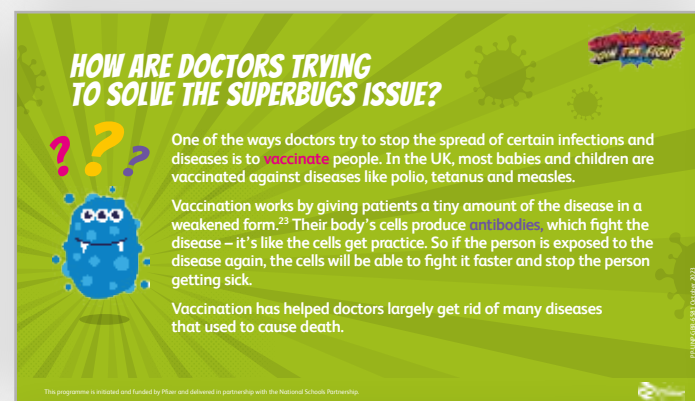
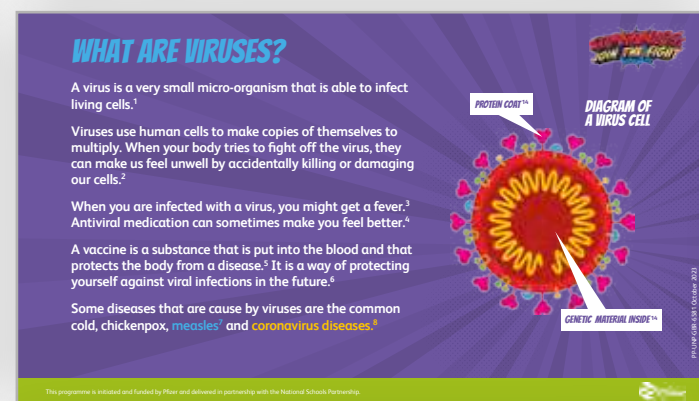
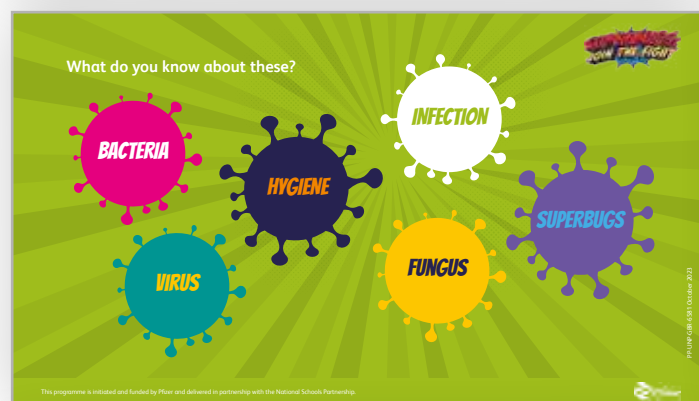
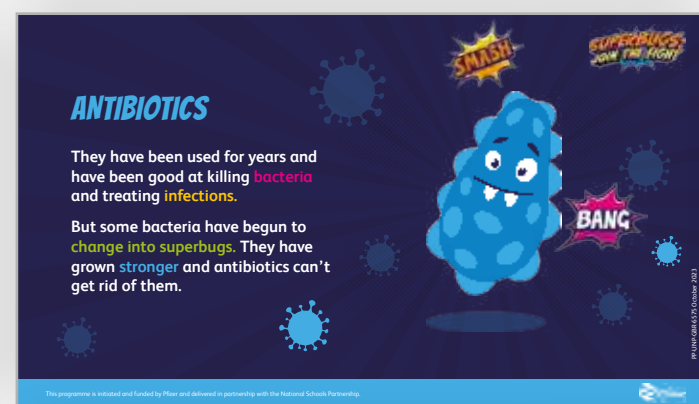
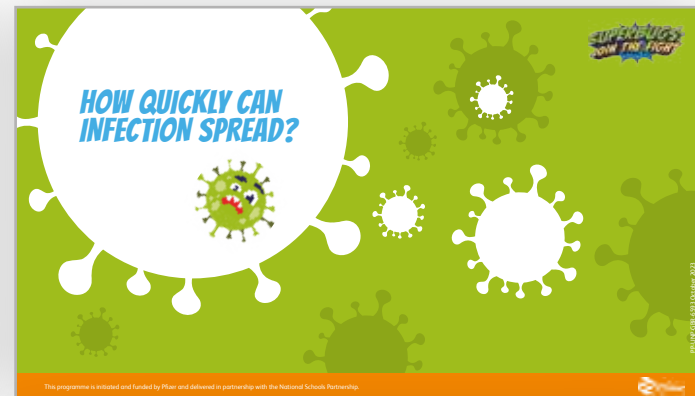
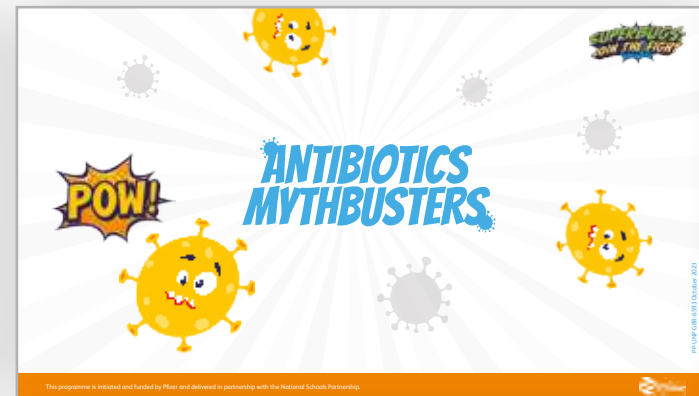
SKY ARTS WEEK





This programme is initiated and funded by Pfizer and delivered in partnership with the National Schools Partnership.

PFIZER KIDS INTERACTIVE





WARBURTONS KIDS INTERACTIVE

Warburton's

Bake

THE MOST OF

Life

WORLD

OF BREAD

EXPLORE

CHALLENGE

Warburton's

Bake

THE MOST OF

Life

THE WORLD OF BREAD MAP

HOME

Ready to explore
The World of Bread?
Click on a place to
find out more.

NORTH AMERICA

UK

EUROPE

ASIA

SOUTH AMERICA

AFRICA

AUSTRALASIA

ANTARCTICA

Warburton's

Bake

THE MOST OF

Life

UNITED KINGDOM

HOME

Explore the UK!
Try clicking on the
symbols by nation
to find out more.

BACK

Hello there
I am Timmy.

LEARN MORE ABOUT LOREM IPSUM

Timmy lives in the United Kingdom

Warburton's

Bake

THE MOST OF

Life

ENGLAND

HOME

BACK

Hello there
I am Timmy.

FOOD & DRINK

HEALTH & WELLBEING

TYPICAL WEATHER

PLANTS & ANIMALS

PHYSICAL GEOGRAPHY

CRUMPET

Donsectetur adipiscing elit, sed do eiusmod tempor incididunt ut labore et dolore magna aliqua. Ut enim ad minim veniam, quis nostrud exercitation ullamco laboris nisi ut aliquip ex ea comm odo consequat. Duis aute iure dolor in reprehenderit in volu ptate velit esse cillum dolore eu fugiat nulla pariatur excep.

Warburton's

Bake

THE MOST OF

Life

ASIA (INDIA)

HOME

Explore Asia!
Try clicking on
the symbol to
find out more.

BACK

Hello there
I am Sunita.

LEARN MORE ABOUT LOREM IPSUM

Sunita lives in India

Warburton's

Bake

THE MOST OF

Life

ASIA (INDIA)

HOME

BACK

Hello there
I am Sunita.

FOOD & DRINK

HEALTH & WELLBEING

TYPICAL WEATHER

PLANTS & ANIMALS

PHYSICAL GEOGRAPHY

ROTI

Donsectetur adipiscing elit, sed do eiusmod tempor incididunt ut labore et dolore magna aliqua. Ut enim ad minim veniam, quis nostrud exercitation ullamco laboris nisi ut aliquip ex ea comm odo consequat. Duis aute iure dolor in reprehenderit in volu ptate velit esse cillum dolore eu fugiat nulla pariatur excep.

Warburton's

Bake

THE MOST OF

Life

YOUR SCORE 00 / 00

HOME

DRAG AND DROP

CHALLENGE 1

Where did each bread come from?
Simply drag and drop the labels to
the correct place on the map.

CRUMPET

SODA BREAD

BABA BRITH

BAGUETTE

CORBREAD

CHIPA

SCORE

ROTI

INJERA PLAYSREAD

Warburton's

Bake

THE MOST OF

Life

YOUR SCORE 00 / 00

HOME

DRAG AND DROP

CHALLENGE 1

Where did each bread come from?
Simply drag and drop the labels to
the correct place on the map.

CRUMPET

SODA BREAD

BABA BRITH

BAGUETTE

CORBREAD

CHIPA

SCORE

ROTI

INJERA PLAYSREAD

Warburton's

Bake

THE MOST OF

Life

YOUR SCORE

HOME

YOU SCORED

10

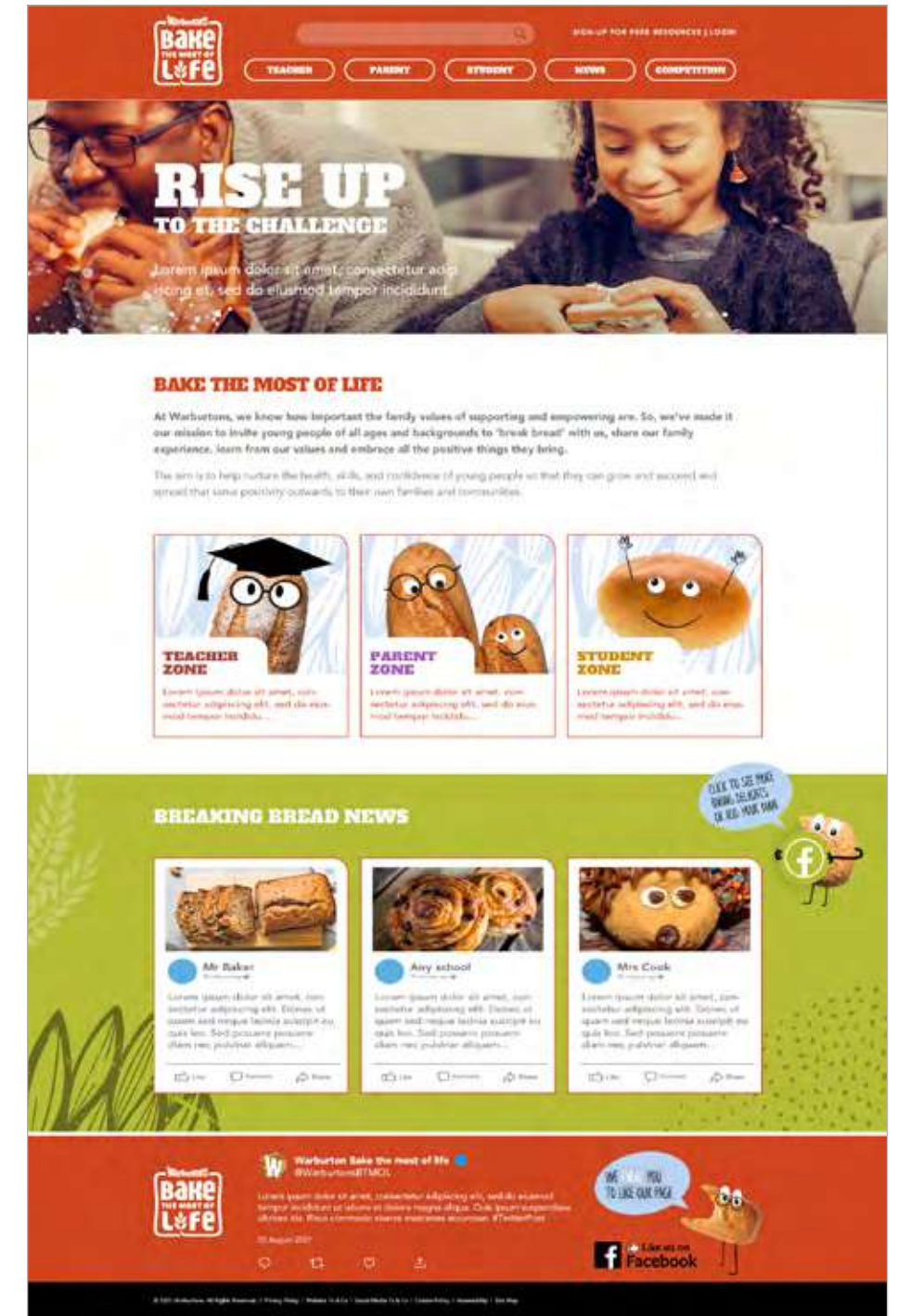
OUT OF 18

NOT BAD!
But would you
like to try again?

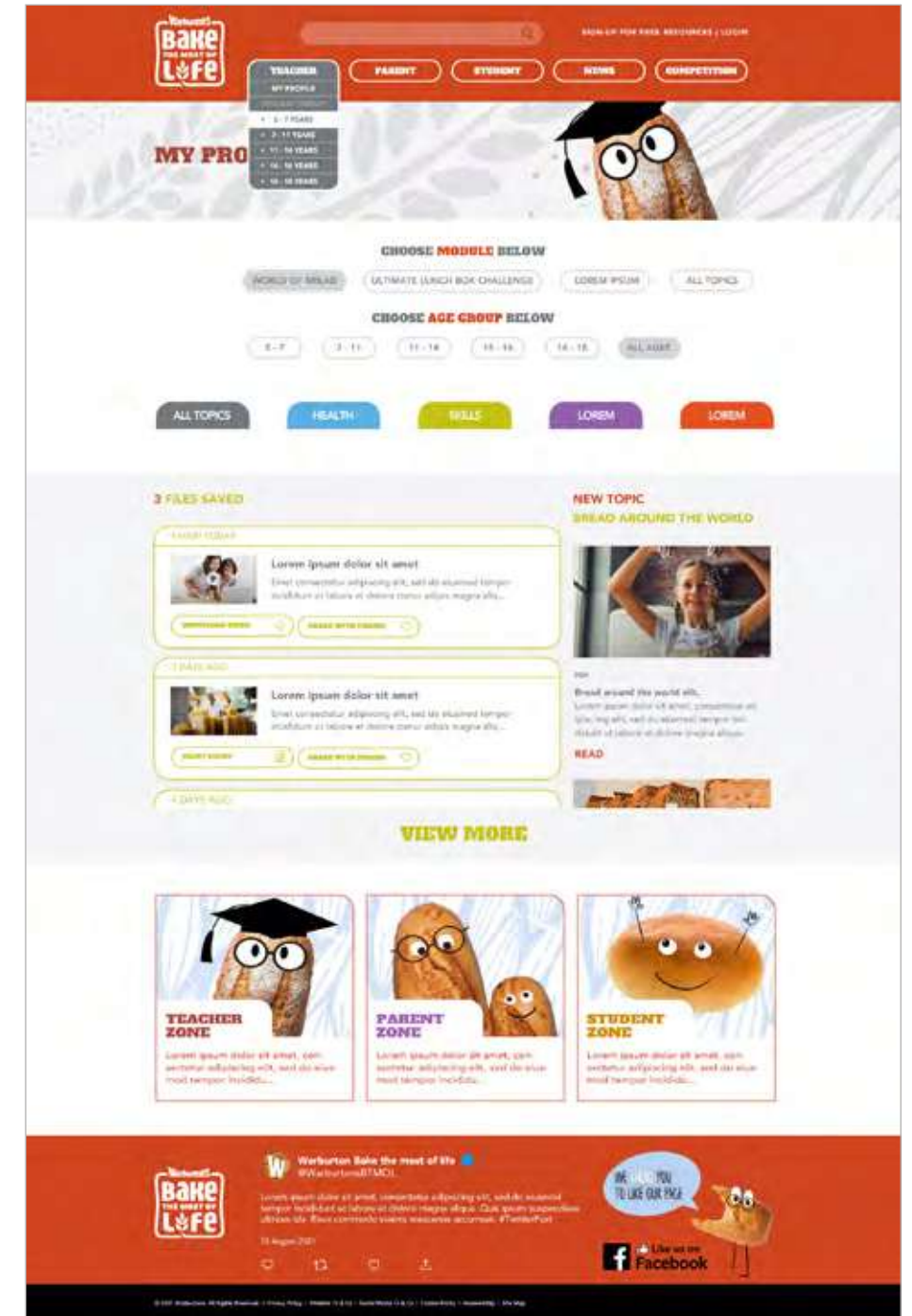
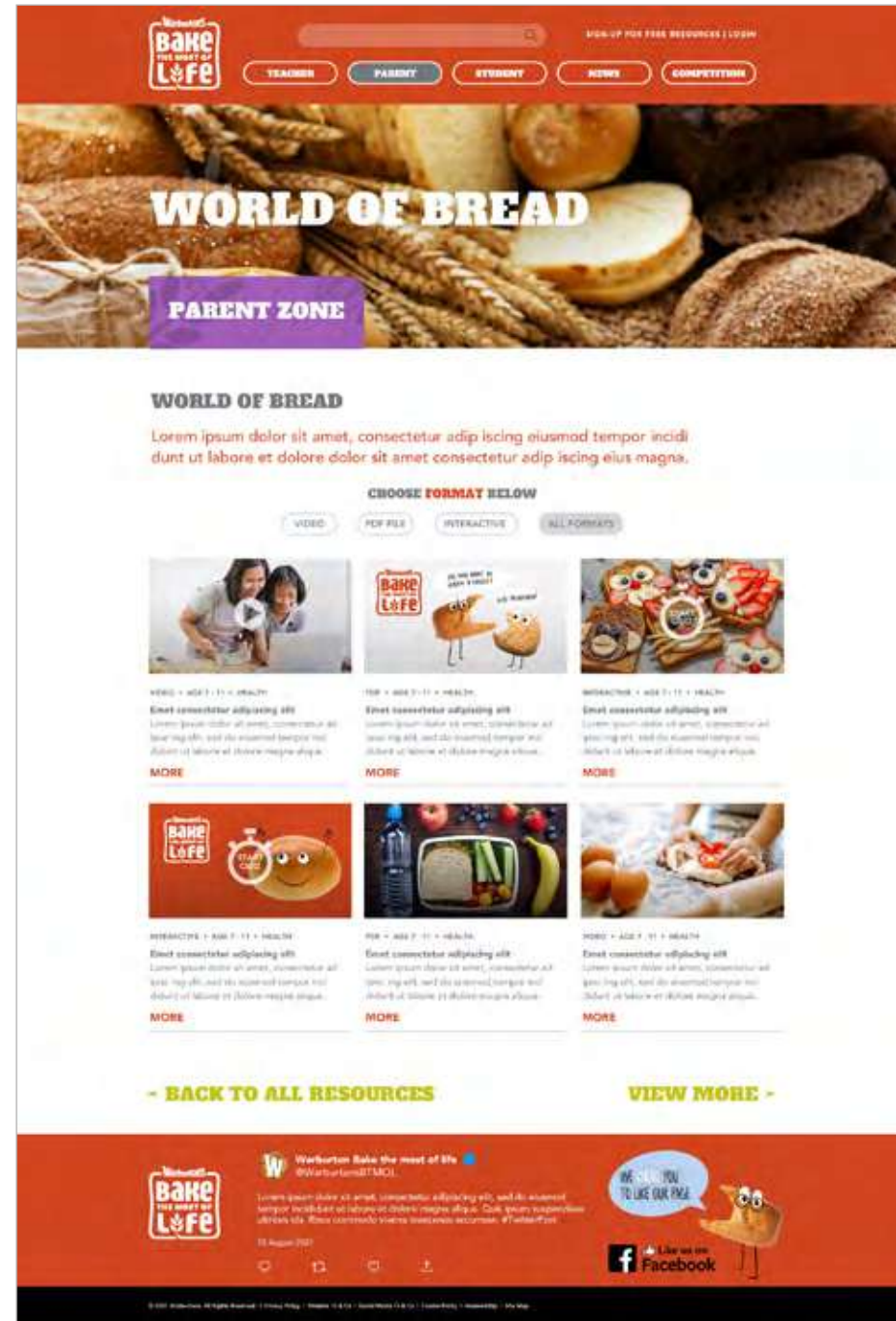
TRY AGAIN

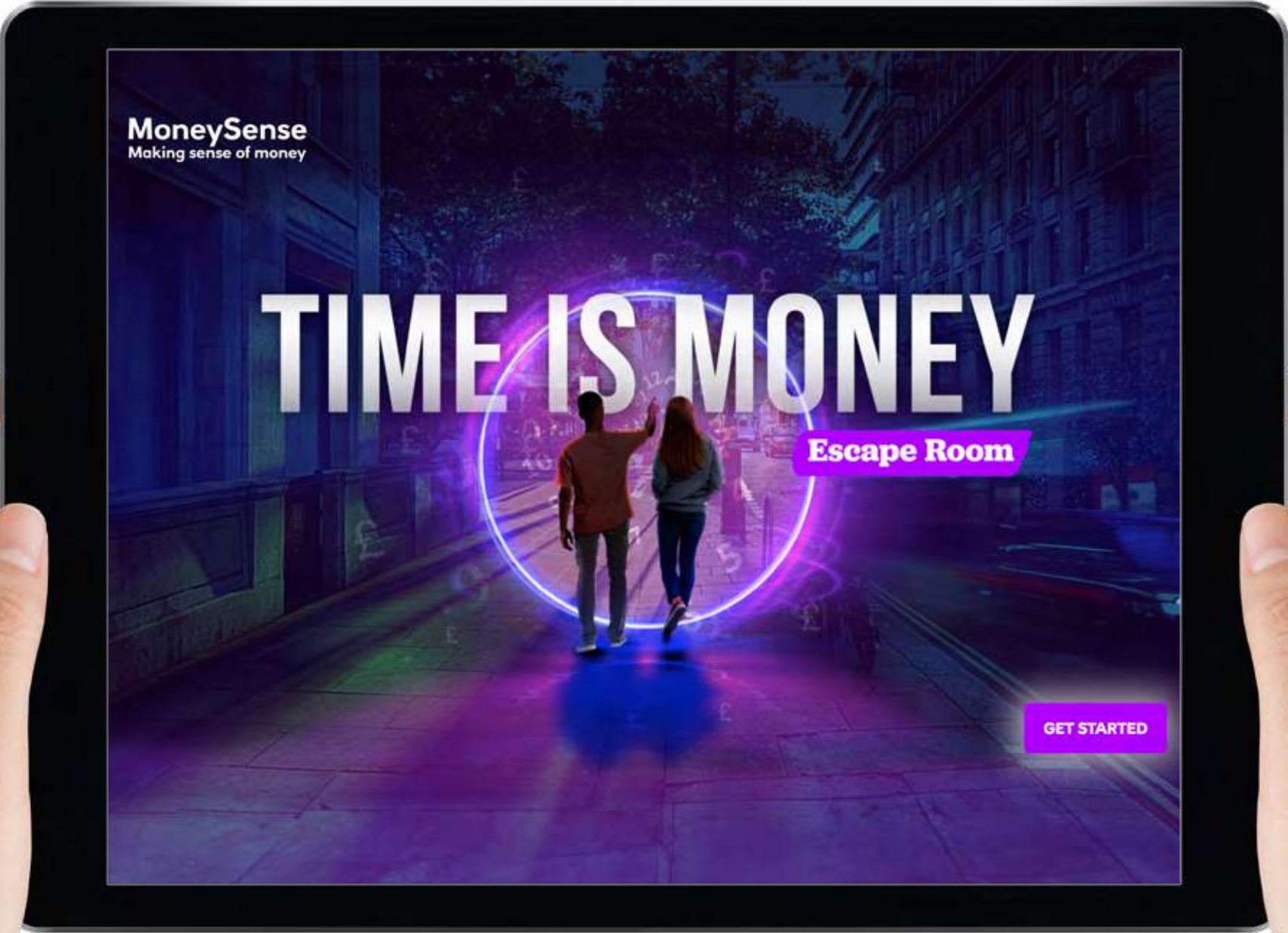
PRINT SCORE

WARBURTONS MICROSITE

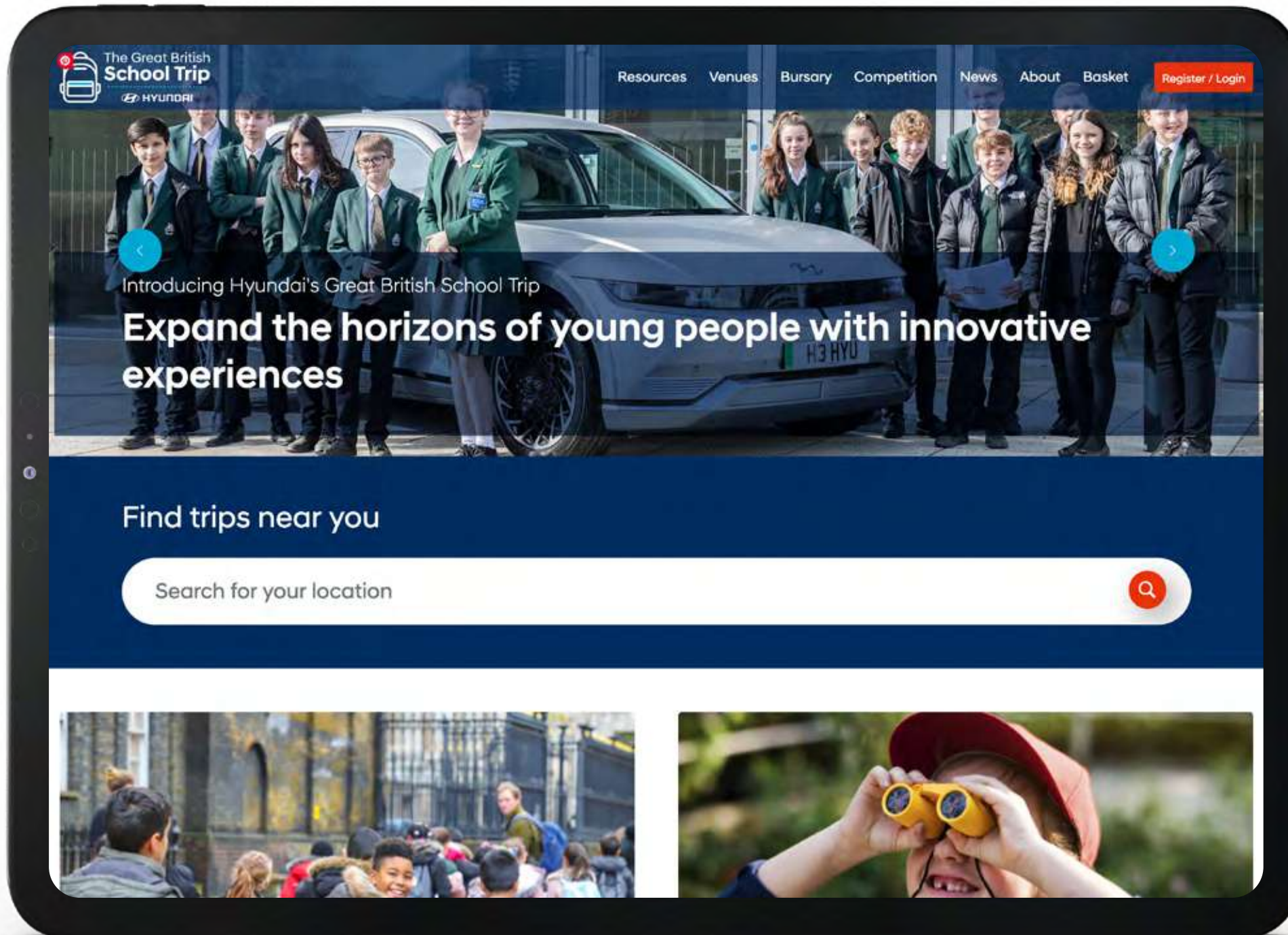


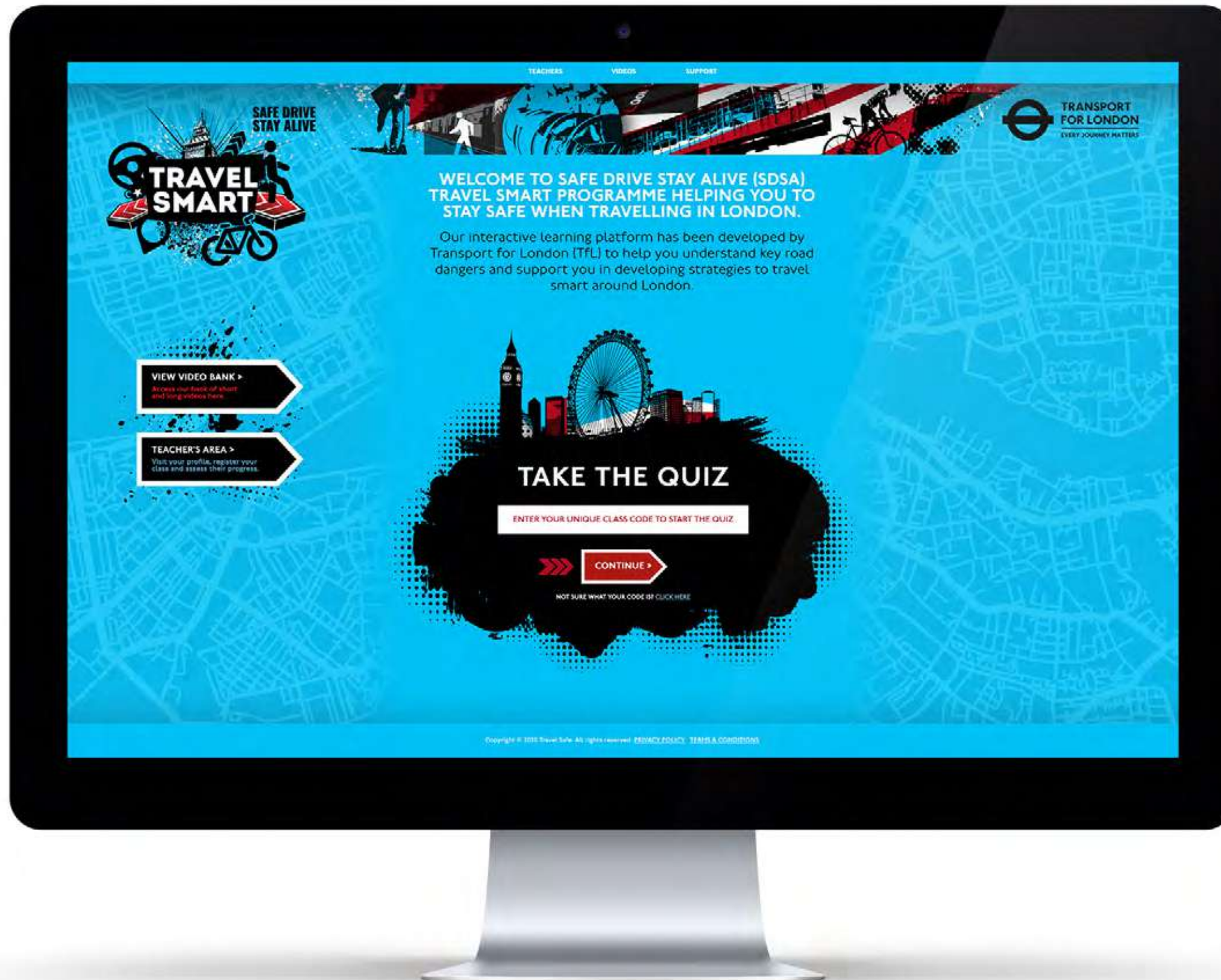
WARBURTONS MICROSITE





HYUNDAI





TRANSPORT FOR LONDON

SAFE DRIVE
START ALIVE

TRANSPORT
FOR LONDON

GOV.UK

WATCH A SERIES OF SHORT VIDEOS AND TAKE THE QUIZZES TO HELP YOU BECOME A SAFER DRIVER, MOPED RIDER, CYCLIST AND PEDESTRIAN AROUND LONDON.

After each video, a quiz will test your knowledge on the actions you would take to travel in a smarter and safer way.

Let's get started with a video from DJ Ted, who will tell you everything you need to know about the Travel Smart programme.

TEACHER'S AREA

VIEW VIDEO BANK

00:00

00:27

NOW THAT YOU'VE WATCHED THE VIDEO, TAKE OUR LONDON QUIZ!

TRAVEL SMART
LONDON QUIZ

How much do you know about travelling in London? Take our quiz and test your knowledge about the London Travel Smart video.

START QUIZ

SAFE DRIVE
START ALIVE

TRANSPORT
FOR LONDON

GOV.UK

CLASSES

Select your class below to find out more about it, and to see if you're eligible for it.

VIEW VIDEO BANK

TEACHER'S AREA

	London's Independent Schools	VIEW QUIZ
	London's Independent Schools	VIEW QUIZ
	London's Independent Schools	VIEW QUIZ
	London's Independent Schools	VIEW QUIZ
	London's Independent Schools	VIEW QUIZ
	London's Independent Schools	VIEW QUIZ
	London's Independent Schools	VIEW QUIZ
	London's Independent Schools	VIEW QUIZ
	London's Independent Schools	VIEW QUIZ
	London's Independent Schools	VIEW QUIZ

SAFE DRIVE
START ALIVE

TRANSPORT
FOR LONDON

GOV.UK

CYCLE QUIZ

LONDON QUIZ
WHILE QUIZ
WHEN QUIZ

RULES OF THE ROAD AND STAYING SAFE

On the road, it's important to know the rules of the road. It's important to know the rules of the road. It's important to know the rules of the road.

QUESTION 1

What is the maximum speed limit for a car on a single carriageway?

10 mph

20 mph

30 mph

40 mph

YOU'RE MISSING SOMETHING

You've missed something. You've missed something. You've missed something.

QUESTION 2

What is the maximum speed limit for a car on a dual carriageway?

10 mph

20 mph

30 mph

40 mph

CONGRATULATIONS

You've completed the quiz. You've completed the quiz. You've completed the quiz.

QUESTION 3

What is the maximum speed limit for a car on a dual carriageway?

10 mph

20 mph

30 mph

40 mph

NO

You've completed the quiz. You've completed the quiz. You've completed the quiz.

CONTINUE

SAFE DRIVE
START ALIVE

TRANSPORT
FOR LONDON

GOV.UK

FULL VIDEOS

Full videos of the Travel Smart programme.

VIEW VIDEO BANK

TEACHER'S AREA

TRAVEL SMART
LONDON QUIZ

How much do you know about travelling in London? Take our quiz and test your knowledge about the London Travel Smart video.

START QUIZ

SAFE DRIVE
START ALIVE

TRANSPORT
FOR LONDON

GOV.UK

CYCLE QUIZ

LONDON QUIZ
WHILE QUIZ
WHEN QUIZ

CYCLE QUIZ

Whether you cycle every day, or every now and then, it's vital that you know how to keep yourself safe on the roads of London. Listen to our speakers and take the quiz to ensure you know the right way to get to a similar situation.

START QUIZ



BP plc GREENHOUSE INTERACTIVE

WELCOME

How good is your knowledge of the greenhouse effect, greenhouse gases, global warming and climate change?

Study the diagrams and complete the quiz to find out how much you know.

CONTINUED

A stream of solar radiation strikes Earth throughout the year.

Each square metre of the Earth receives an average of 340 watts of energy from the sun every year. We'd need 440 million large power stations to generate this amount.

About one third of solar radiation is reflected back into space by the Earth's atmosphere.

CONTINUED

About two-thirds of solar radiation reaches the Earth's surface.

More solar energy is absorbed by land with vegetation and the oceans than the deserts or land covered in ice or snow.

Solar radiation passes through the atmosphere.

Solar energy can be stored via photo-voltaic cells.

CONTINUED

Question 3

Lorem ipsum dolor sit amet, conse ctetur adipiscing elit, sed do eiusmod tempor incididunt ut labore?

CONTINUED

About two-thirds of solar radiation reaches the Earth's surface.

More solar energy is absorbed by land with vegetation and the oceans than the deserts or land covered in ice or snow.

Solar radiation passes through the atmosphere.

Solar energy can be stored via photo-voltaic cells.

CONTINUED

Longwave (infrared) radiation causes the greenhouse gas molecules to vibrate. When they vibrate they emit energy in all directions. This energy heats up the Earth's atmosphere and surface, and is known as the greenhouse effect.

The infrared radiation makes the greenhouse gas molecules vibrate.

The major components of the atmosphere (N₂ and O₂) are two-atom molecules too tightly bound together to vibrate. This means they do not absorb heat or contribute to the greenhouse effect.

CONTINUED

The increase in greenhouse gases means more infrared radiation is trapped in the atmosphere. This is known as the enhanced greenhouse effect. The temperature on the Earth's surface and in the lower atmosphere rises as a result. This is called global warming. Global warming results in climate change.

Scientists predict if we don't reduce the amount of greenhouse gases we are releasing into the atmosphere, global temperatures could increase by as much as 6°C over the next one hundred years.

The effects of global warming are already being felt around the globe. Polar ice caps are melting, sea levels are rising, heat waves are longer and hotter, droughts are more frequent and storms are more extreme. Crops are failing and biodiversity is being lost.

CONTINUED

Countries around the world are joining together and working towards targets that reduce greenhouse gas emissions and global warming. Here are some of the things people around the world are doing to tackle climate change:

Developing creative technologies to remove emissions from the atmosphere and store them safely (carbon capture and storage).

Changing to cars powered by electricity made from renewable sources.

Moving away from eating meat and dairy, to consuming more of a plant-based diet.

Moving away from fossil fuels and towards low-carbon renewable energy sources, such as wind, solar, hydrogen and biofuels.

Using natural solutions like forests, to remove carbon dioxide from the atmosphere.

CONTINUED

YOU SCORED

5

OUT OF 8

Your understanding of the greenhouse effect isn't bad at all. Have you tried the other Climate Change activities yet?

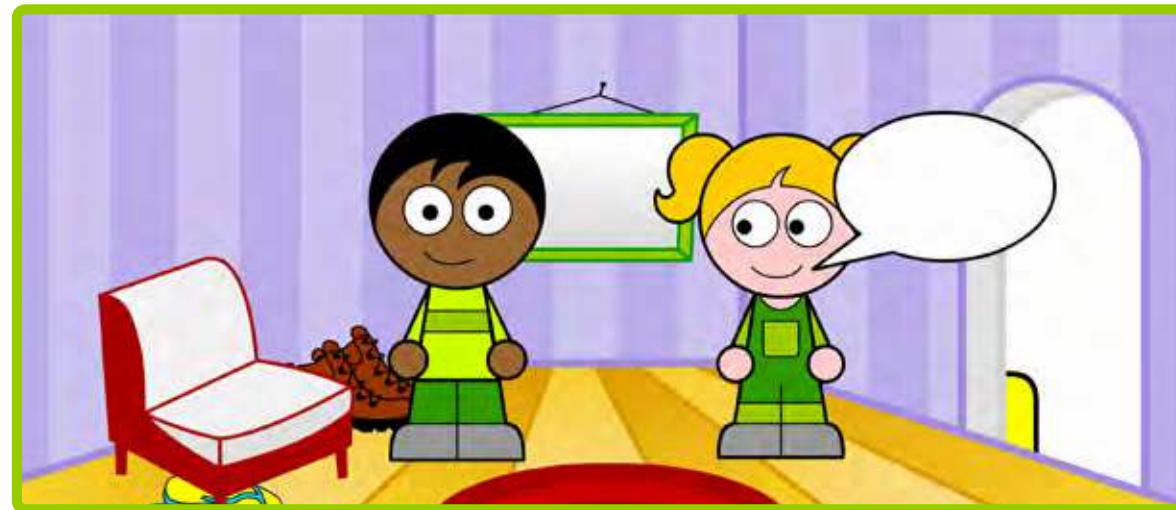
TRY AGAIN

CONTINUED

Get a grip

Which shoe has the best grip?

This is a special online experiment which will try to answer this question. But before you can start, you need to know a little about shoes and friction. Click the play arrow to see a short animation which tells you what you need to know.



Next



Get a Grip

1. Section Title Here

Score: 24/24

The name given to the world inside computers. It's not a real place, but real things can happen there like shopping, talking to friends and doing experiments!

You're going to carry out an investigation to find the best grip. But instead of using a laboratory, you'll be doing your experiment in cyberspace. If you do the experiment well, you'll score enough points to see a photo gallery

Q Which shoe do you think has the best grip?
Click 'Select' to pick one picture.

A Trainer

B School shoe

C Walking boot

D Flip-flop

Select

Select

Select

Select

Roll over the words highlighted in orange if you don't know what they mean.

Get a Grip

1. Section Title Here

Score: 24/24

On this screen you will plan how to make a fair test to find out which shoe has the best grip. To help you think about this, click 'True' or 'False' for each statement.

A It will still be a fair test if the four shoes are made from different materials.

True

False

B You will need one of each type of shoe to carry out the experiment.

True

False

C To test grip, you will have to compare how each shoe grips the same surface.

True

False

Get a Grip

1. Section Title Here

Score: 24/24

Here are three ways the test could be set up. Look at the, carefully then click 'Select' on the one which you think is closest to a fair test.

A Find out how hard it is to rub each shoe against a wall.

B Find out how much force is needed to pull each shoe across a tabletop.

C Find out how far each shoe slips along a floor after it has been dropped down a ramp.

Select

Select

Select

Get a Grip

1. Section Title Here

Score: 24/24

You're ready to start the test. Here's what to do next in order to find out which shoe has the best grip.

1 The trainer will be tested first.
Drag it onto the left end of the table top

2 The string from the force meter must be attached to the shoe.
Click 'Attach' to do this.

3 To test the trainer, click the hand holding the force meter.
You can see the reading on the force meter on the display below the table.

Attach

Trainer

School shoe

Walking boot

Flip-flop

Force meter reading (newtons)

0 2 4 6 8 10 12 14 16 18 20

Get a Grip

1. Section Title Here

Score: 24/24

The bar chart needs a title plus numbers and labels on the axes. Click magnify to see the charts in closeup and compare them with the figures in the results table. Click 'Select' to choose the chart which shows the result of your experiment correctly.

Print

See results table

A Graph A Which shoe has the best grip?

B Graph B Which shoe has the best grip?

C Graph C Which shoe has the best grip?

Select

Select


Select


Get a Grip


1. Section Title Here


Score: 24/24

Gripping things is very important in all sorts of ways in everyday life. Here are some examples of gripping - friction - in action.











BP plc ENERGY SOURCE CHALLENGE

Energy sources challenge

Explore energy sources

EXPLORE

Everyday, we use energy for travel, heating, food, light and for electronics including phones and computers.

But where does that energy come from and how is it made? What are the pros and cons of using each energy source and how are the energy sources we use changing?

START EXPLORING >

Energy sources challenge

Explore energy sources

ENERGY SOURCES

COAL

OIL

NUCLEAR

SOLAR

WIND

HYDROELECTRIC

WAVE

TIDAL

GEOTHERMAL

BIOMASS

Click on each energy source to find out more.
Click on the group buttons at the bottom of the screen to see the energy sources that belong to each group and to find out more about them.

ENERGY SECTORS

Non-renewable

Renewable

Fossil fuels

Energy from water

Produces CO₂ and other GHGs

Energy sources challenge

Explore energy sources

ENERGY SOURCES

COAL

OIL

NUCLEAR

SOLAR

WIND

HYDROELECTRIC

WAVE

TIDAL

GEOTHERMAL

BIOMASS

FOSSIL FUELS

Coal, oil and gas are Fossil fuels, commonly known as **non-renewable** energy **sources**. They are a store of **chemical** energy formed over millions of years, from dead plants and **marine organisms**.

Pros

- **Reliable**
- Provide large amounts of energy
- Low **extraction** costs

Cons

- Fossil fuels are **finite**
- Can cause harm to living **organisms**
- Burning Fossil fuels releases **carbon dioxide** and other **greenhouse gases** into the **atmosphere**. Scientists believe that this **pollution** contributes to **global warming**, causing **climate change**.

ENERGY SECTORS

Non-renewable

Renewable

Fossil fuels

Energy from water

Produces CO₂ and other GHGs

Energy sources challenge

Explore energy sources

COAL

About

How it works

Pros and cons

Case study

Energy careers

ENERGY SOURCES

COAL

OIL

NUCLEAR

SOLAR

WIND

HYDROELECTRIC

WAVE

TIDAL

GEOTHERMAL

BIOMASS

1.

Around 300 million years ago, **photosynthesising** plants stayed alive using light from the sun and **carbon dioxide** from the air.

NEXT >

ENERGY SECTORS

Non-renewable

Renewable

Fossil fuels

Energy from water

Produces CO₂ and other GHGs

Energy sources challenge

Explore energy sources

COAL

About

How it works

Pros and cons

Case study

Energy careers

ENERGY SOURCES

COAL

OIL

NUCLEAR

SOLAR

WIND

HYDROELECTRIC

WAVE

TIDAL

GEOTHERMAL

BIOMASS

4.

Coal is taken to a power station and burnt. The **thermal** energy transferred in this process heats water, turning it into steam.

Fact: Lorem ipsum dolor sit amet, consectetur adipiscing elit imperdiet.

< BACK

NEXT >

ENERGY SECTORS

Non-renewable

Renewable

Fossil fuels

Energy from water

Produces CO₂ and other GHGs

Energy sources challenge

Explore energy sources

COAL

About

How it works

Pros and cons

Case study

Energy careers

ENERGY SOURCES

COAL

OIL

NUCLEAR

SOLAR

WIND

HYDROELECTRIC

WAVE

TIDAL

GEOTHERMAL

BIOMASS

Project site

Taichung power plant
Longjing, Taichung, TAIWAN

Key facts

- Burns over 14 million tonnes of coal each year and is one of the world's biggest contributors to **carbon dioxide emissions** from one single power station.
- 70% of the coal used by the plant is sourced from Australia, United States, South Africa and Indonesia.
- Has plans to improve efficiency and reduce pollutants.

ENERGY SECTORS

Non-renewable

Renewable

Fossil fuels

Energy from water

Produces CO₂ and other GHGs

Energy sources challenge

Take the challenge

TAKE THE CHALLENGE

How much do you know about different energy sources and their pros and cons? Can you remember key facts and data?

LEVEL 1

Energy sources and forms of energy

LEVEL 2

Pros and cons of different energy sources

LEVEL 3

Energy facts and data

Energy sources challenge

Take the challenge | Level 1

Score 1/10

Question: 1 of 10

What is the meaning of the word renewable?

A. Something that can be re-used

B. Something that cannot be re-used

C. Something that will run out

Energy sources challenge

Take the challenge | Level 1

Score 1/10

FANTASTIC WORK

You scored 10 out of 10.
You certainly know alot about energy sources and forms of energy.

BACK HOME >

BP plc ANIMAL EXPLORER QUIZ



BP plc ANIMAL EXPLORER QUIZ

Animal explorer

Age 5 - 7

SOUND ON

FLAMINGO

Fact file

Flamingo

Did you know?

Simply hover over the animal ectetur adipiscing elit, sed diam nonummy nibh euismod tincidunt ut laoreet dol mag.

Habitat - where do they live?

Lorem ipsum dolor sit amet, adipiscing elit. Integer quis risus sit amet nunc sodales congue.

Diet - what do they eat?

Lorem ipsum dolor sit amet, adipiscing elit. Integer quis risus sit amet nunc sodales congue.

Can fly

Yes

Lives in water

Yes

Lives on land

Yes

UK wildlife

No

Farm animal

No

Family pet

No

Diet groups

Carnivores

Eats animals

Herbivores

Eats plants

Omnivores

Eats both

Similar features

Minibeasts

Birds

Fish

Reptiles

Amphibians

Mammals

Lorem animal

Can fly

Lives in water

Lives on land

UK wildlife

Farm animal

Family pet

Animal explorer

Age 5 - 7

SOUND ON

HIPPOPOTAMUS

Fact file

Hippopotamus

Did you know?

Simply hover over the animal ectetur adipiscing elit, sed diam nonummy nibh euismod tincidunt ut laoreet dol mag.

Habitat

Lorem ipsum dolor sit amet, adipiscing elit. Integer quis risus sit amet nunc sodales congue.

Diet

Lorem ipsum dolor sit amet, adipiscing elit. Integer quis risus sit amet nunc sodales congue.

Can fly

No

Lives in water

Yes

Lives on land

Yes

UK wildlife

No

Farm animal

No

Family pet

No

Diet groups

Carnivores

Eats animals

Herbivores

Eats plants

Omnivores

Eats both

Similar features

Minibeasts

Birds

Fish

Reptiles

Amphibians

Mammals

Lorem animal

Can fly

Lives in water

Lives on land

UK wildlife

Farm animal

Family pet

Animal explorer

Age 5 - 7

SOUND ON

ANIMALNAME

Fact file

Can fly

Did you know?

Simply hover over the animal ectetur adipiscing elit, sed diam nonummy nibh euismod tincidunt ut laoreet dol mag.

Subhead

Lorem ipsum dolor sit amet, adipiscing elit. Integer quis risus sit amet nunc sodales congue. Curabitur volutpat, ipsum vitae fermentum bibendum, dolor libero ultricies nisl, non lacinia sem magna vitae lorem. Aliquam feugiat eu magna ut efficitur. Nulla quis blandit nulla, ac interdum felis. Donec in libero.

Diet groups

Carnivores

Eats animals

Herbivores

Eats plants

Omnivores

Eats both

Similar features

Minibeasts

Birds

Fish

Reptiles

Amphibians

Mammals

Lorem animal

Can fly

Lives in water

Lives on land

UK wildlife

Farm animal

Family pet

Animal explorer

Age 5 - 7

SOUND ON

Quiz: Spot the animal

Can you spot a bee or a flying fish?

Play this game to find out how good you are at identifying and naming animals.

How to play

1. You will be given a group of animals to look at and asked to identify one.

2. Choose the correct animal from the photo gallery and drag it to the answer box.

START QUIZ

Animal explorer

Age 5 - 7

SOUND OFF

Quiz: Spot the animal

Question 1 of 5

Can you spot an Eagle?

Drag and drop the correct animal here

Animal explorer

Age 5 - 7

SOUND OFF

Quiz: Spot the animal

Question 1 of 5

Can you spot an Eagle?

Spot the animal

Teaching feedback

Right answer

Yes this is an eagle lorem ipsum dolor sit amet,consectetur adipiscing elit, sed do eiu.

Next

Drag and drop the correct animal here

BRITISH GLASS INTERACTIVE



BRITISH GLASS INTERACTIVE

British Glass

SOUND OFF

Stop, that is a glass bottle and all glass bottles and jars should be recycled. There is a recycling bin just up there.

It's ok, I recycle at home.

START MISSION

British Glass

GLASS GUARDIANS

SCORE: 1

HOW MUCH GLASS DO YOU THINK WAS RECYCLED IN THE UK IN 2019?

0 5 10 15 20 25 30 35 40 45 50 55 60 65 70 75 80 85 90 95 100

YOU SCORED 1 POINT!

In 2017, for every 100 bottles used in the UK about 71 were recycled. But as glass bottles and jars are 100% recyclable and can be recycled endlessly, the UK hopes that by 2030 at least 90 bottles and jars will be recycled for every 100 used.

Let's go and find out more!

NEXT

British Glass

GLASS GUARDIANS

SCORE: 1

FIRST WE NEED TO POP OUR GLASS IN THE CORRECT PLACE.

Drag and drop the 3 glass products into the right place.

Great work – that's right, glass bottles and jars should be placed into the recycling. Let's follow our glass to the recycling plant!

Oops! We need to place the glass in the recycling so we can start our journey.

Jar Green glass bottle Brown glass bottle

NEXT

British Glass

GLASS GUARDIANS

SCORE: 3

AT THE GLASS RECYCLING PLANT!

Move the laser across all the glass to sort the colours ready for the next stage.

START FINISH

British Glass

GLASS GUARDIANS

SCORE: 4

AT THE GLASS RECYCLING FACTORY!

The cullet has arrived at a factory! Sofia and Rushil are trying to figure out what happens next. Have a think – who do you agree with? Click on the person you agree with.

I think its just crushed into a powder to make it look like sand as one ingredient used to make glass is sand.

I think the pieces of glass get heated up to melt it.

AGREE WITH SOPHIA AGREE WITH RUSHIL

British Glass

GLASS GUARDIANS

SCORE: 4

LET'S INVESTIGATE!

We are now going to do a little investigation so you can answer our question about if we are recycling enough glass.

We are going to make glass in 3 ways.

1) One tonne of glass using just raw materials only

2) One tonne of glass using a mixture of raw materials

3) One tonne of glass using just only cullet (recycled glass)

Raw materials for making glass are sand, soda ash and limestone.

A tonne is a unit of weight. That's about the same as a small car!

Which mixture do you think is best? Let's find out.

NEXT

British Glass

GLASS GUARDIANS

SCORE: 1

THE FURNACE

Your first step is to measure the temperature each option melts at. Can you help us push each option into the furnace one at a time?

Nice work – to melt the mix of raw materials and cullet the energy used was 3850 MJ.

Cullet Raw materials Cullet and raw materials

3230 MJ 4470 MJ 3850 MJ

NEXT

British Glass

GLASS GUARDIANS

SCORE: 4

AFTER THE FURNACE

We now have molten glass. The next steps is for it to be chopped into smaller pieces which are called gobs. Each gob makes a single bottle or jar. Right, it is time to shape the gobs. It only takes 5 seconds to do this! Can you set the timer for us?

Oops! Try again that wasn't quite the right amount of time.

Use the arrow buttons to adjust the timer and click 'Go' when you're done.

NEXT

British Glass

GLASS GUARDIANS

SCORE: 4

Remember glass bottles and jars are 100% recyclable and can be recycled endlessly, so spread the message to recycle glass and be a Glass Guardian!

WATCH THE JOURNEY OF GLASS RECYCLING VIDEO

SHARE THIS INTERACTIVE WITH A FRIEND

FIND OUT MORE ABOUT GLASS RECYCLING

TELL US WHAT YOU THOUGHT!